

What's new?

User's Manual

Written for WhatsNew.exe Version 1.0

Copyright (C) 2001-2004 Fumio KAWAMATA

## Table of contents

1. Introduction .....	1
1.1. About the What's new? .....	1
1.1. The files whose the others have copyright .....	1
1.2. Cautions in case of re-distribution or modifying .....	1
1.3. Contact address .....	1
1.4. Downloading the latest veriosn.....	2
2. How to Install and Uninstall the program.....	2
3. Running of the program .....	2
3.1. The setting file (whatsnew.ini) .....	2
3.2. Screen shot immediately after Program Starting.....	3
3.3. Entering parameters .....	3
3.3.1. Target Directory .....	3
3.3.2. Target Files.....	3
3.3.3. Ignore Subdirectories .....	4
3.3.4. Ignore Files .....	4
3.3.5. Period .....	4
3.3.6. Template.....	4
3.4. Chekking of the modification .....	5
3.5. Copy and paste of the result .....	5
4. Updating history.....	6

## 1. Introduction

### 1.1. About the What's new?

The “What's new?” scans HTML files which are updated recently and acquires the list of date and title of the HTML files. It is useful when creating the updating history of a homepage.

The “What's new?” is free software with source codes written by the Japanese version of the Boaland Delphi Professional Version 6. You can use the “What's new?” free and continuously.

The files which constitute the “What's new?” are classified into the files which Fumio KAWAMATA has copyright, and the files which the others have copyright. The files which Fumio KAWAMATA has copyright are distributed under the term of the GNU General Public License (GPL) Version 2 Free Software Foundation announced officially.

#### 1.1. The files whose the others have copyright

- (1) The files in the directory src¥jconvert belong to the EarthWave Soft (IKEDA Takahiro).
- (2) The file gpl.txt belongs to the Free Software Foundation.

### 1.2. Cautions in case of re-distribution or modifying

If it is in a state having received, it can re-distribute freely. The files which Fumio KAWAMATA has the copyright can be modified or distributed under the term of the GNU GPL Version 2. Please ask each author if you modify or distribute the files which the others have copyright.

You can introduce the “What's new?” in the book or magazine without any asking. And you can also distribute it in the appendix CD-ROM/DVD-ROM supplement to a book or magazine without any asking. You do not need any asking before or after in the both cases. The author does not need the sample issue of the book or magazine.

### 1.3. Contact address

Please mail the following address if you have any question or comment to the program “What's new?” or this document.

**[fumio@my.email.ne.jp](mailto:fumio@my.email.ne.jp)**

Please note that following mails are not delivered. They will be removed from the mail server automatically.

- (1) The mail from high anonymity domain typified by hotmail.com or yahoo.com.
- (2) The HTML mail or mail which contains “multipart” in the Content-Type: field.

Please keep in mind that those who use Microsoft Outlook or Microsoft Outlook

Express attached with the Microsoft Windows may have transmitted an HTML mail without your noticing.

(3) The mail which size is large in common sense. The virus is appended in many cases.

(4) The mail considered that the date was shifted intentionally.

#### 1.4. Downloading the latest veriosn

You can download the latest version of the “What’s new?” from following WEB page.

<http://openlab.jp/fumio/>

## 2. How to Install and Uninstall the program

The “What’s new?” is distributed as the file name which combined the letter string “wnew”, major version number, -, minor version number and the letter string “.zip”. For example, the file name will be “wnew1-2.zip” if its version is 1.2.

Please extract the file anywhere you like using unzip program. That is all for install. Please add the shortcut to the startup menu manually.

The “What’s new?” does not have a proprietary uninstaller. So please remove extracted files and the setting file mentioned later manually.

## 3. Running of the program

### 3.1. The setting file (whatsnew.ini)

Just double click the “What’new?” icon in order to execute the “What’s new?”. The dialog shown in Figure 1 will be popped up if you execute the “What’s new?” for the first time.

The “What’s new?” creates a setting file named whatsnew.ini in the directory where the value of an environment variable HOME specifies. However, the “What’s new?” creates it in the same directory where whatsnew.exe exists when the environment variable HOME does not exist. The “whatsnew.ini” file is created under C:¥HOME as it is shown in Figure 1, since the author has set the value of an environment variable HOME as C:¥HOME.

Please also remove the whatsnew.ini if you remove the other program files.

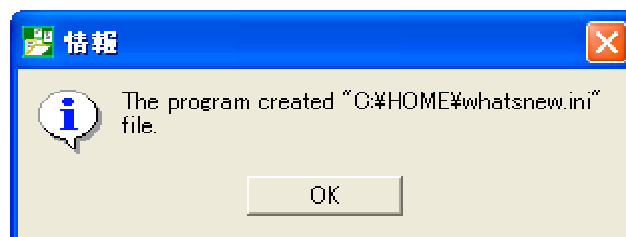


Figure 1 Notice dialog of setting file creation

### 3.2. Screen shot immediately after Program Starting

Execution of the “whatsnew.exe” displays a form as shown in Figure 2. The figure 2 is the form which displayed whatsnew.exe Version 1.0.0.16 on the Japanese version of Microsoft Windows XP Professional.

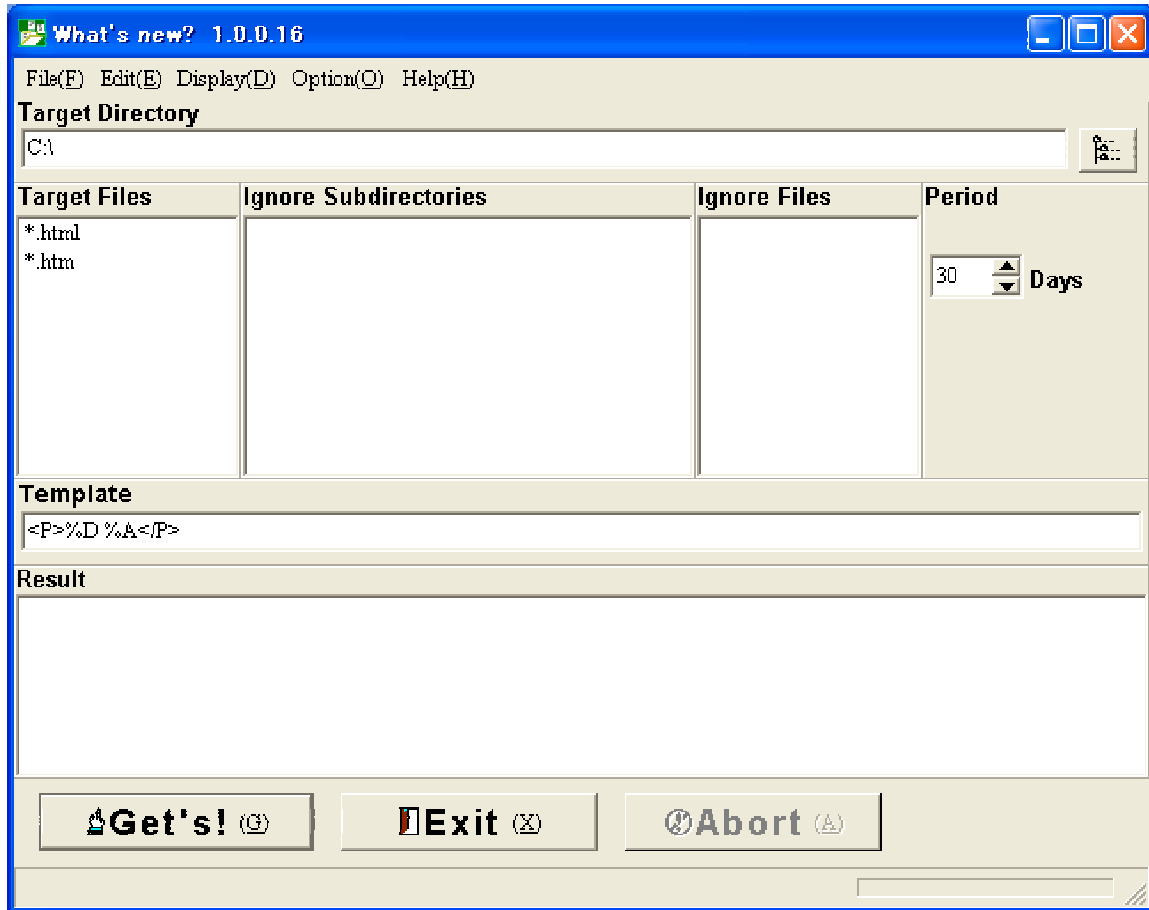


Figure 2 Screen shot immediately after Program Starting

You can change the font of the letter string in the edit box. Select [Edit|Font] menu item and choose font which you want to use. You can change the font of the letter string only in the edit box. You can not change the font displayed on the button or displayed above the edit box.

### 3.3. Entering parameters

#### 3.3.1. Target Directory

Enter the directory where you want to check an updating situation in the Target Directory edit box. Click the directory tree icon in the right-hand side of the edit box if you want to select the directory using the directory selecting dialog.

#### 3.3.2. Target Files

Specify the HTML filename in the Target Files edit box. Usually, specify \*.html and

\*.htm in the default state.

### 3.3.3. Ignore Subdirectories

Specify the subdirectories you want to ignore to check under the directory specified in the Target Directory edit box. It must be specified as the relative path to the directory specified in the Target Directory edit box. Specify SECRET in the Ignore Subdirectories edit box when the directory specified in the Target Directory edit box is C:\WWW and the directory you want to ignore is C:\WWW\SECRET.

### 3.3.4. Ignore Files

Specify the files you want to ignore to check.

### 3.3.5. Period

The “What’s new?” targets files updated recently less than at what day you specified in the Period edit box. By the default, it is 30.

### 3.3.6. Template

Specify special letter string how the information for a listing is displayed, in the Template edit box. For displaying the updated date and the title of the HTML file (letter string surrounded by <TITLE> and </TITLE>) on each one line, specify;

<P>%D %t</P>

or

<p>%D %t</p>

Note that the display order always becomes the order of reverse with a updated date. For setting up a hot spot and enabling it to display an applicable HTML file when the listed title of a HTML file is clicked, specify;

<P>%D %A</P>

or

<p>%D %a</p>

The difference between %A and %a is a difference in whether the source code of a HTML file is deployed with a capital letter, or deployed in a small letter. The result will be;

<P>2004/05/01 <A HREF=”index.html”>Welcome to my homepage</A></P>

when you specify as <P>%D %A</P>. On the other hand, the result will be;

<p>2004/05/01 <a href=”index.html”>Welcome to my homepage</a></p>

when you specify as <p>%D %a</p>. Take adjustment against other portion of the source code of the HTML file if you specify %A or %a. Specify %A if the tag is unified into the capital letter, and specify %a if it is unified into the small letter. When you want to

also display time besides the date, specify;

<P>%D %T %A</P>

The date of the HTML file will be deployed if you specified %T. Specify;

<P>%D %P %A</P>

when you want to display the relative path of the HTML file. The %P deploys the relative path of the HTML file. Specify;

<LI>%D %A</LI>

when you want to display the list by itemized statement. Add <UL> and </UL> manually or replace lines surrounded by <UL> and </UL>.

The letter string for deployment which can be used within the Template edit box, and its meaning are shown in Table 1.

Table 1 Deployment letter string and its meaning

Letter string	Meaning
%D	It deploys on the date obtained from the time stamp of a HTML file. Form is YYYY/MM/DD. For example, in the case of May 1, 2004, it is set to 2004/05/01.
%T	It deploys at the time obtained from the time stamp of a HTML file. Form is HH:MM:SS.
%P	It deploys on the relative path to the directory specified in the Target Directory edit box.
%t	It deploys the title of the HTML file (letter string surrounded by <TITLE> and </TITLE>).
%A	It deploys a hot spot and enabling it to display an applicable HTML file when the listed title of a HTML file is clicked. The letter string of the tags are displayed in capital letter as following. <P>2004/05/01 <A HREF="index.html">Welcome to my homepage</A></P>
%a	It similar as %A. However, the letter string of the tags are displayed in small letter as following. <p>2004/05/01 <a href="index.html">Welcome to my homepage</a></p>

#### 3.4. Chekking of the modification

Please click the Get's! button. The result will be displayed in the Result editbox.

#### 3.5. Copy and paste of the result

You can copy the result into the clip board if you select the [Edit|Copy To Clipboard] menu item. Please paste it on the text editor.

#### 4. Updating history

- Disclosed version 1.0 on May 27, 2004.
- Started the programming in 2001. Since the author was interested also in LINUX those days, the author programmed for the crossing platform environment by Borland Delphi and Borland Kylix.